

CHALET CHIC

MEETS URBAN MODERN
WITH A TIMELESS DESIGN AT
THE BLUE MOUNTAINS

BY ALAA YASSIN
PHOTOGRAPHY BY ERICA PRINN-M'CARTHY



BRINGING THE BEST OF METROPOLITAN STYLE TO THE RICH CHALET TOWN, THIS MAGNIFICENT HOME WAS DESIGNED AND BUILT BY SOLCORP DEVELOPMENTS.

With a stunning view through both the front and back end of this Blue Mountains residence, large windows were an absolute necessity, said owner Anne Solomon.

As you pull into the driveway, you are immediately swept away by the beautiful urban design of the exterior. The unique, all-glass, two-story front entrance welcomes you into the residence. The beautiful view of the mountains is unobstructed from inside the glass entrance.

Ample sunlight shines through the front foyer and into the rest of the open-concept main floor. Past the entrance and into the living space, a seating area wraps around the elegant two-story wood-burning fireplace with limestone tile surround. "We decided to go with this look because we wanted to decorate with elegant simplicity using clean straight lines," said Solomon. »



The rich walnut hardwood flooring brings a trendy yet timeless style complemented by walnut cabinets with a similar stain.



Separating the kitchen from the living space is a large harvest dining table that seats 10 comfortably.

On the opposite end of the great room is the open kitchen. With two separate white quartz stone waterfall islands, two stoves as well as the oversized side-by-side fridge and freezer, this high-end kitchen was designed with kosher cooking in mind. Separating the kitchen from the living space is a large harvest dining table that seats 10 comfortably.

The rich walnut hardwood flooring brings a trendy yet timeless style complemented by walnut cabinets of a similar stain. Tasteful neutral hues are used all around. A palette of taupe and grey is brought in through the chalet chic and modern furniture arranged by Habitat Interiors in Thornbury.

Benjamin Moore's Revere Pewter was the main colour of paint used throughout the house. "The bright light shining through the windows in the great room give it a lighter tone on the main level in comparison to the darker basement," said Solomon.

Grand oversized windows expose the serene view of the ravine, which is all part of the private backyard. The seven-foot patio is great for entertaining a large group in addition to the open concept main floor.

Located conveniently on the main floor but secluded from the rest of the house is the master retreat. "It's one of two master bedrooms in this home," said Solomon. Across from the bed, a gas fireplace with a textured porcelain surround adds sophistication to the space.

However, the ensuite is where true luxury awaits. The modern style freestanding Victoria and Albert soaking tub is placed beneath a large window with a soothing view of the mountains. The high-end tub offers clean lines and functionality with a modern twist to the Victorian silhouette. Adding reverse blinds can give homeowners the utmost privacy while enjoying the spectacular view, said Solomon.

Double sinks are fixed within a flooring vanity, similar in style to the kitchen islands. This allows the floor to flow easily throughout the entire house. The airy look beneath the vanity adds to the spacious feel of the ensuite. »

Customized spaces
for real people,

living well.



Kitchen • Bathroom • Family Room • Home Additions & More!



Total Living Concepts

TotalLivingConcepts.com

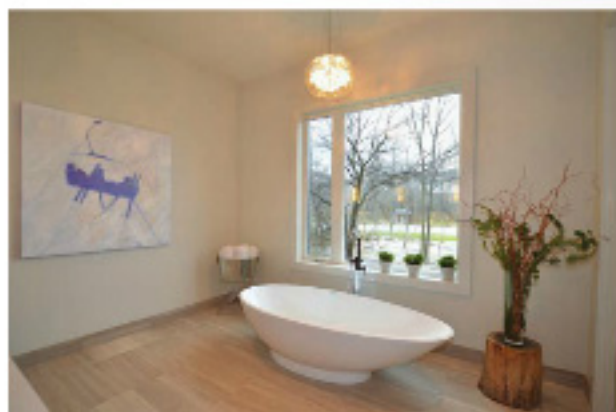
Call 705 721-9148

for an in-home consultation or visit our
showroom at 464 Penetanguishene Road, Barrie.





Across from the bed, a gas fireplace with a featured porcelain surround adds sophistication into the space.



BOTTOM LEFT:

The modern freestanding Victoria and Albert soaking tub is placed beneath a large window with a soothing view of the mountains. The high-end tub offers clean lines and functionality with a modern twist to the Victorian silhouette.

BOTTOM RIGHT: Double sinks are fed with a floating vanity.



Adjacent to the tub is a steam shower with double rain showerheads on opposite sides. With a built-in bench this private hideaway serves as the ultimate relaxation spot.

Located just outside the ensuite bathroom sits a built-in vanity that makes the perfect makeup nook and a spacious his and her dressing room.

Back in the hallway just before the entrance, double pocket doors lead into a spacious room with the same spectacular view of the mountains. "This room could be furnished as an office or an enclosed family room," said Solomon.

Owen Sound Ledgerock complements the floating staircase by the front foyer. Set in a linear horizontal pattern,

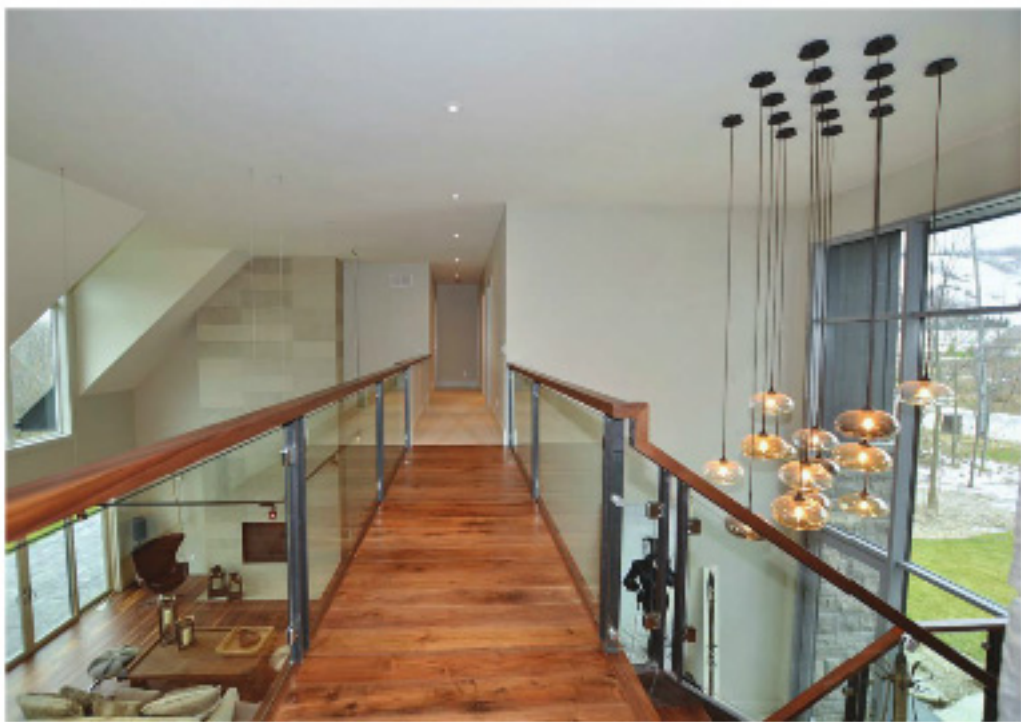
the lines bring a continuation of scenery from the outside to the inside. More limestone is seen throughout the foyer, creating lots of visual interest by combining both smooth and coarse materials.

The glass and steel railings supporting the floating staircase add create an architectural interest while maintaining the openness of the grand entrance. Above that an urban modern style chandelier, from Universal Lighting in Toronto, hangs from the two-story high ceiling.

On the other end of the hallway beyond the front entrance is the powder room. The walnut vanity is covered with the same white quartz previously seen in the kitchen.



TOP: Owen Sound Ledgerrock complements the floating staircase by the front foyer. Set in a linear horizontal pattern, the lines bring a continuation of scenery from the outside to the inside.



RIGHT: An open pathway from the staircase overlooks the great room and divides the second floor into two sides.

en. But the focal point here is the sleek and clean glass tile backsplash that surrounds the vessel sink.

Throughout the house straight lines and lots of subtle geometric shapes create visual interest. The interior design mixes an exquisite masculine feel with a tasteful feminine touch.

The main floor is designed to be spacious enough for a couple to spend the weekend without needing to use the second floor or the basement, said Solomon. But if more space is needed for the children or guests to spend the weekend, additional bedrooms are available on two more levels.

An open pathway from the staircase overlooks the great room and divides the second floor in two. To the right is three more bedrooms. One of them is another master suite. "With its own ensuite bathroom this room is perfect for the in-laws," said Solomon.

Each bathroom in this beautiful residence was designed to create a sanctuary feel. With heated floors, glass and porcelain tile finishes complemented with modern Riobel faucets, each bathroom blends the same clean sleek style found throughout the home.

On the other end of the pathway is a grand sunken media room. Placed at the front end of the house, this room shows off the stunning mountains view. Equipped with an attractive gas fireplace surrounded by dark slate stone and a wet bar nearby, it's the perfect space for hosting movie nights.

The laundry room is conveniently located on the second floor. However, if homeowners choose to have the laundry on the main floor, the rough in by the mudroom will make it possible, said Solomon.

But that's not it for square footage. There's still plenty of space in the basement. A large open entertainment recreation space is completely brightened up by the oversized windows all around.

Down here, there are three other rooms, all waiting to be assigned as bedrooms, fitness room or even a play area for children. In addition to the generous space, there are still plenty of storage closets in the basement.

Every possible design detail was considered when constructing this luxurious getaway abode nearby the private Craigleith and Alpine ski clubs. The unique design is a signature style for Solcorp Developers. "Our homes are always designed to fit a variety of different lifestyles," said Solomon. ■